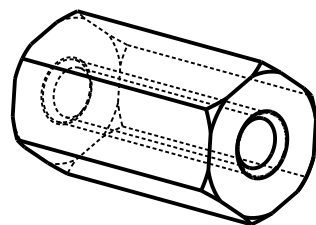
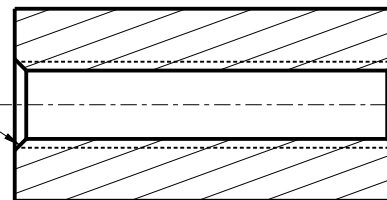


| PART NO. | "A" |
|----------|-------|
| 8400 | .125 |
| 9284 | .187 |
| 8401 | .250 |
| 9285 | .312 |
| 8402 | .375 |
| 9286 | .437 |
| 8403 | .500 |
| 9287 | .562 |
| 8404 | .625 |
| 9288 | .687 |
| 8405 | .750 |
| 9289 | .812 |
| 8406 | .875 |
| 9290 | .937 |
| 8407 | 1.000 |

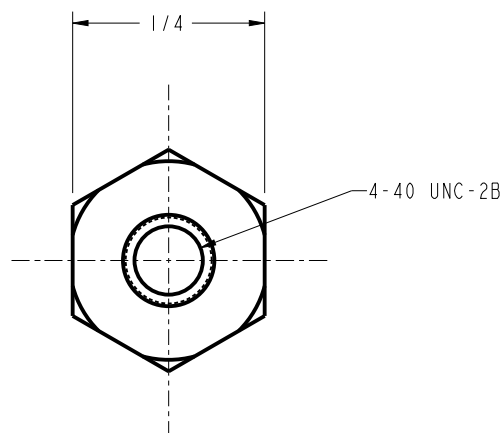


SCALE 3.000

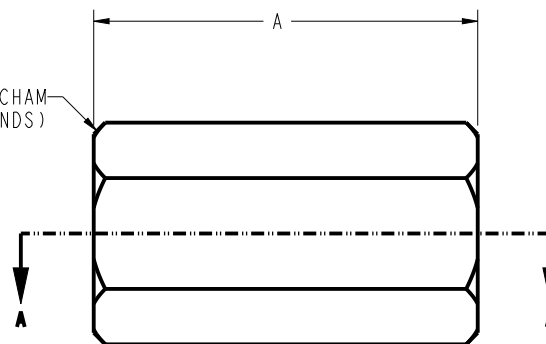
.015x45° CHAM
(BOTH ENDS)



SECTION A-A



.015x45° CHAM
(BOTH ENDS)




SCALE 4.000

NOTE:

1. ALL DIMENSIONS APPLY BEFORE PLATING
2. THDS SHALL BE TO GAUGE FIT (GO/NO-GO: 2A/2B) PRE-PLATE (GO: BASIC) AFTER PLATING OR OTHER FINISH
3. BREAK ALL SHARP CORNERS AND REMOVE BURRS
4. INSIDE CORNERS TO HAVE R.020 MAX
5. THREAD MAY COME FROM BOTH SIDES AND MEET IN THE MIDDLE

THIS DRAWING AND THE
INFORMATION THEREIN IS
THE PROPERTY OF
ABBATRON, LLC AND ALL
UNAUTHORIZED USE OR
REPRODUCTION THEREOF IS
PROHIBITED.

| | | | | | | | | | | |
|---|--------|---|--|---------------|--|--|--|------|----------------|------|
| MATERIAL: ALUMINUM 2011 T3 | | FINISH: CODE 41 | | HT: --- | | <div> ABBATRON</div> | | | | |
| DIMENSIONAL TOLERANCES UNLESS OTHERWISE STATED | | TITLE: 1/4" HEX ALUMINUM STANDOFF 4-40 THD | | | | | | | | |
| .XX | .XXX | | | | | | | | | |
| | | | | | | | | | | |
| FRACTIONS | ANGLES | | | | | | | | | |
| | | DRAWN: JJF | | DATE: 2/4/26 | | | | | | |
| SURFACE FINISH ✓ 125 Ra | | CONCENTRICITY ◎ .002 | | CHECKED: DE | | DATE: 2/4/26 | | SIZE | DRAWING NUMBER | REV. |
| | | | | APPROVED: JAS | | DATE: 2/4/26 | | A | SD SMP-00438 | C |